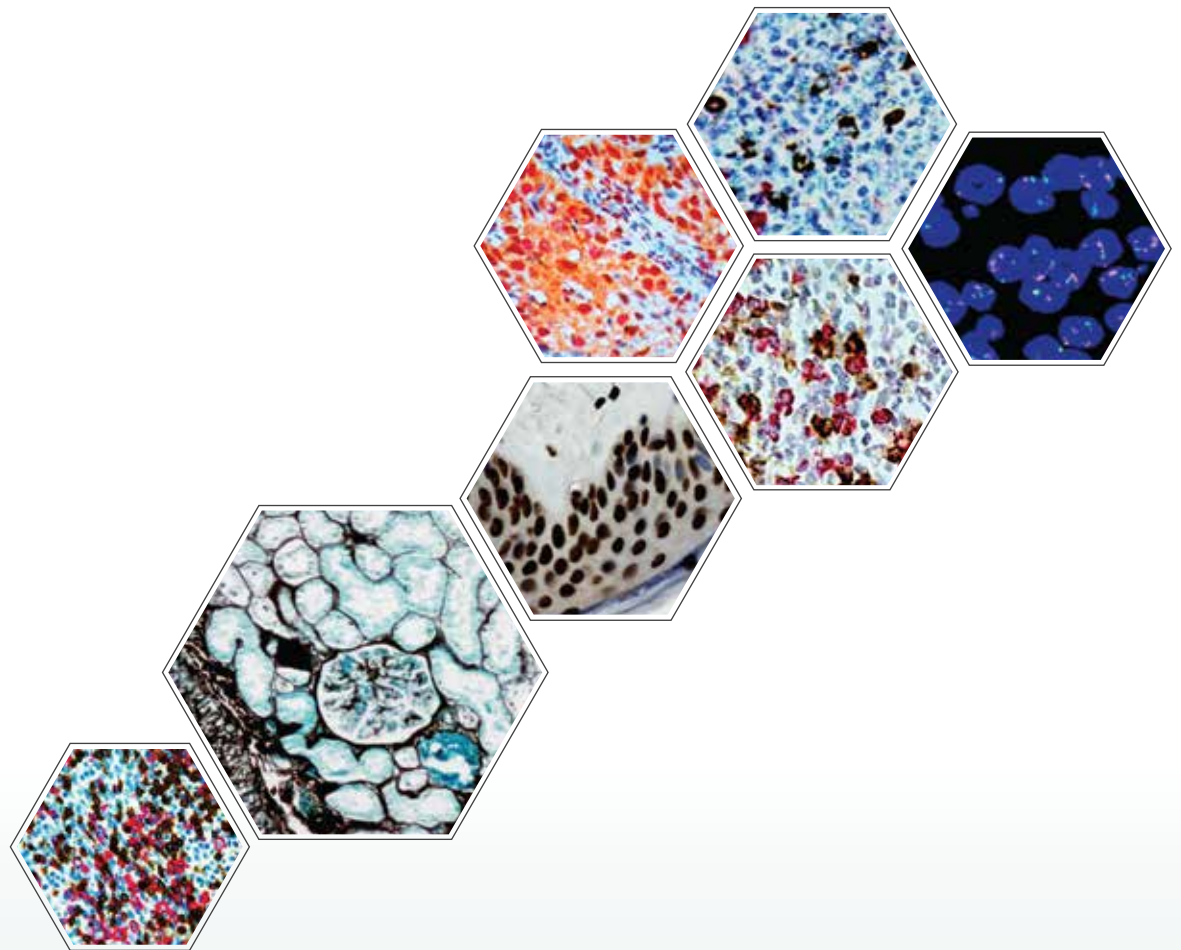


Xmatrix[®] Infinity

Infinite Possibilities...

...for Translational and Clinical Research



**Optimize up to 40 assay
parameters in a single run**
All-in-One
IHC, ISH, FISH, IF



Key Features:

- Xmatrix[®] - a platform technology consisting of fully automated sample processing system, detection kits, antibodies and probes for molecular diagnostics, and translational & clinical research.
- Key technology differentiators are: forty independently controlled thermocyclable (PCR) work stations, a reaction micro-chamber at each position, reagent vials, and bulk-fluidics that enable complete automation of any slide based assays.
 - IHC, ISH, FISH, IF
 - Co-detection and multiplexing of nucleic acid and protein biomarkers
 - miRNA
- Xmatrix[®] Infinity is designed for the life science research, and drug discovery & development. The system adapts and completely automates any manual protocol including denaturation, hybridization, stringency washes, counter stain and final coverslip.
- Multiplexing of ISH and IHC in the same specimen, a hallmark of the system, facilitates co-detection of multiple biomarkers while preserving the tissue morphology and spatial information. The *in situ* quantitative gene-expression profiling enables target identification, prioritization, selection and validation.

Key Features & Benefits



Accelerate the pace of discovery...

- Simultaneous optimization of up to forty parameters in a single run
- Co-detection of multiple nucleic acid and protein biomarkers
- Multiplexing of single or multiple specimens on a single slide
- Multi-format specimen analysis : Tissues - Frozen or FFPE, Cell preparations, Smears, Fine Needle Aspirates (FNA) and many more...



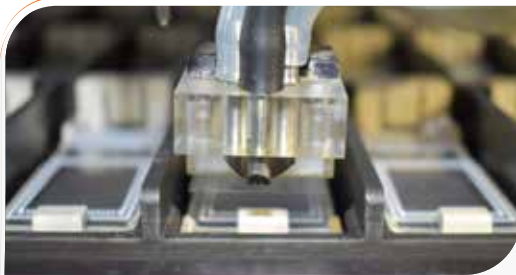
...With flexibility and control

- Intuitive software designed for ease of use and flexibility
- Automate any or all steps from baking through final coverslip
- Fully open system, use reagent of your choice
- Adapts and automates any manual slide based assays



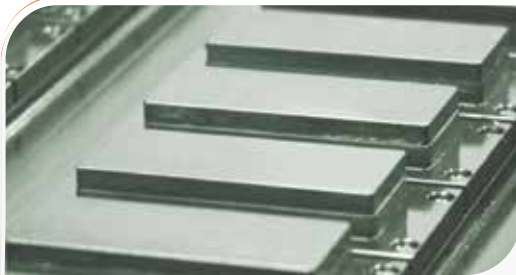
Ease of Use

- Real-time slide map
- Intelligent bulk fluidics system
- Efficient waste management system
- Reports for inventory management and regulatory compliance



Reaction microchamber with microfluidics

- Reduces micro-reagent usage up to 90%
- Even distribution of reagents on the specimen
- Overnight incubation/hybridization without drying of specimen



eXACT™ Temperature Control and Thermo-cycling

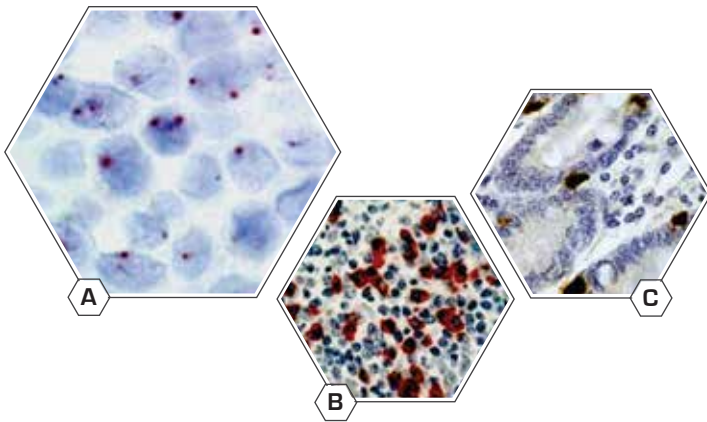
- Forty independently thermocyclable work stations
- Active heating and cooling on each slide - Ambient \rightleftharpoons 95 °C in < 2 min
- Temperature uniformity across entire slide \pm 0.5 °C
- Optimum operating temperature irrespective of the lab conditions
- Temperature range: ambient to 105 °C



On-board De-hydration and Final Coverslip

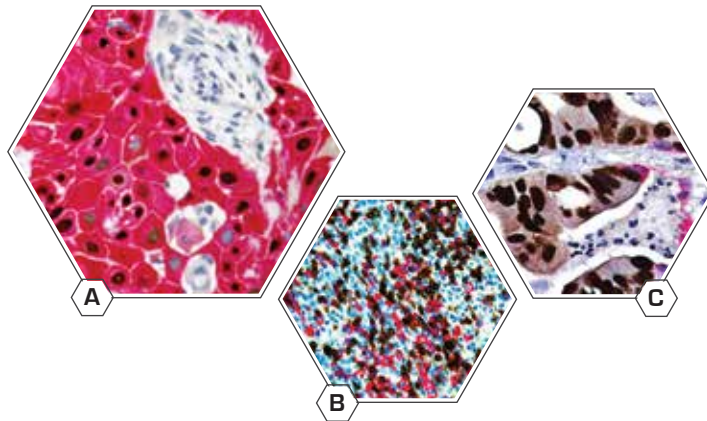
- Eco-friendly (non-xylene) dehydration & clearing
- Permanent mounting and coverslipping
- Curing and cooling

Infinite Possibilities...for Translational and Clinical Research



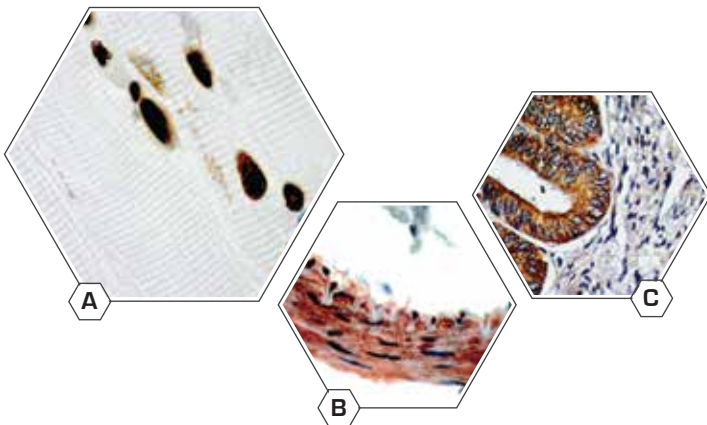
ISH

- A. HPV Probe
- B. Kappa
- C. Cyclin D1



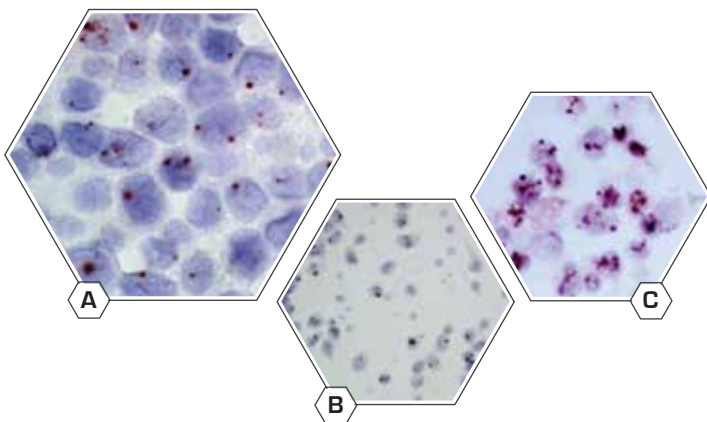
Multiplex Stains

- A. SCC - Anti-p63 + Anti-CK5
- B. Tonsil - Anti-CD3 + Anti-CD20
- C. Metastatic Carcinoma in Lung
Anti-CDX2 + Anti-CK7



Hsa - microRNA

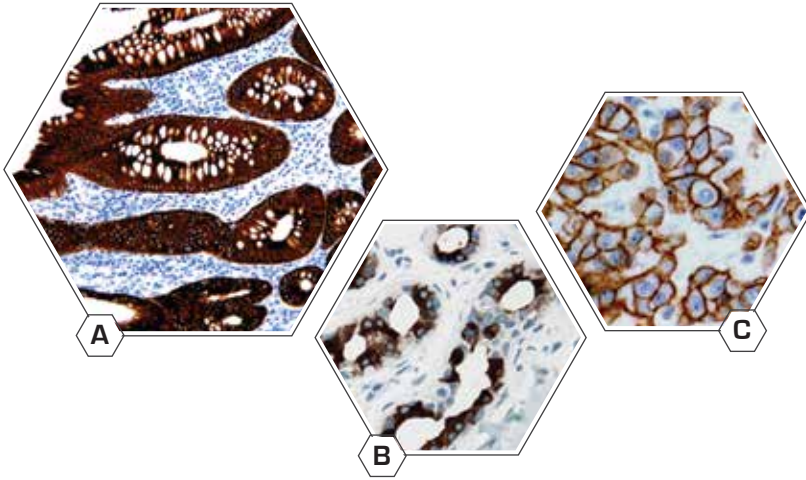
- A. miR-1 Human Skeletal Muscle
- B. miR-145 in Human Small Intestine
- C. miR-222 in Human Cervical Ca.



Single Copy Gene Detection

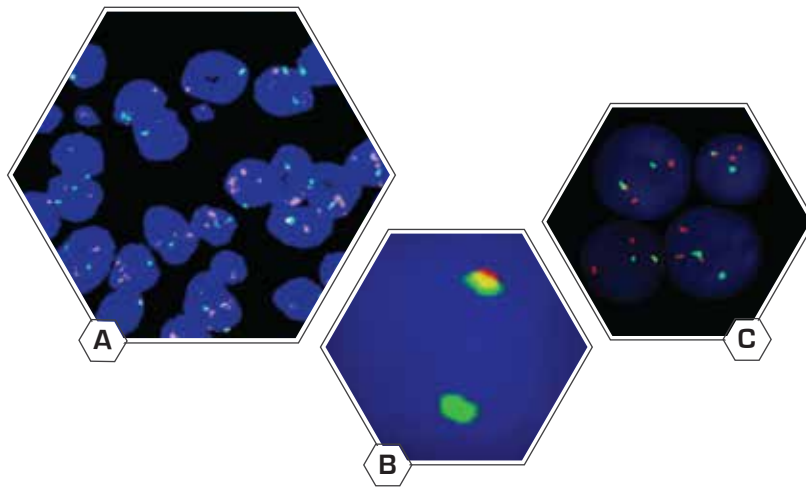
- A. SiHa
- B. HeLa
- C. Caski

Infinite Possibilities...for Translational and Clinical Research



IHC

- A. Anti-CK18
- B. Anti-GCDFP-15
- C. Anti-ErbB-2/Her2



FISH

- A. FISH EGFR
- B. FISH Break apart ALK
- C. FISH HER2

System Specifications

Parameters	Xmatrix® Infinity
Automation	Full (baking through coverslip)
Slide capacity	40 slides
Reagent capacity	49 reagent vials
Reagent vial capacity	16 mL and 5 mL
Bulk reagent carboy & capacity	7 x 4 L
Waste container & capacity	2 x 8 L
Slide sensing	Open
Reagent sensing	Open
Reagent dispense volumes	10-800 µL
Reagent dispenser	Pipette tips

Parameters	Xmatrix® Infinity
Slide temperature range	25-105 °C
Configuration	Free standing
Protocols	Template Protocol
Operating temperature	15-30 °C
Operating humidity	15%-55% RH
Operating voltage	115/230 V AC, 60/50 Hz, 900 W
Dimensions (D/W/H)	29" x 66" x 59"
Weight	400 lb/ 182 Kg

Xmatrix[®] Infinity

Infinite Possibilities...
...for Translational and Clinical Research



Contact Information:

ООО "Биомедикал Системс"

тел/факс (812) 602-31-31, 8-901-311-60-61

e-mail: bms78@mail.ru, сайт: <http://bmsys.ru>



www.biogenex.com